

new Work.



Inspired by the peace of nature's beauty.

The tx:style collection combines organic shapes with simple geometry to create inspiring rhythms.

MANNINGTON
COMMERCIAL

TX:STYLE COLLECTION

PERFORMANCE ATTRIBUTES

- Antron® Legacy Type 6,6 nylon
- Available in 24" x 24" modular and 12' broadloom
- Limited 15-Year ColorSafe® Bleach Resistant Warranty
- Limited 15-Year XGUARD® Stain Resistant Warranty
- Limited 15-Year UltraBac® RE Wear and Backing Warranty
- Limited Lifetime Integra HP® RE Wear and Backing Warranty
- Limited Lifetime Infinity® RE Modular Wear and Backing Warranty

ENVIRONMENTAL ATTRIBUTES

- Certified NSF/ANSI-140 Platinum
- UltraBac® RE and Integra HP® RE contain 10% post-consumer recycled content by total product weight
- Infinity® RE contains 10% post-consumer and 20% pre-consumer recycled content by total product weight
- CRI Green Label Plus
- Adhesive meets VOC content limit of SCAQMD Rule 1168
- ISO 14001 registered manufacturing facility
- Contributes to LEED credits
- Carpet can be reclaimed through Mannington's LOOP® carpet reclamation program

ULTRABAC® RE

- Certified NSF/ANSI-140 Platinum
- Contains 10% post-consumer recycled content by total product weight
- High tuft bind
- Resists edge ravel and delamination
- 12' broadloom
- Limited 15-Year Wear and Backing Warranty

INTEGRA HP® RE

- Certified NSF/ANSI-140 Platinum
- Contains 10% post-consumer recycled content by total product weight
- Impermeable moisture barrier
- Eliminates wick-back staining
- Superior tuft bind wet/dry
- Superior dimensional stability
- Passes British Spill and Moisture Impact Tests
- Flexible in cold/hot environments
- 12' performance broadloom
- Limited Lifetime Wear and Backing Warranty

INFINITY® RE

- Certified NSF/ANSI-140 Platinum
- Contains 10% post-consumer and 20% pre-consumer recycled content by total product weight
- Impermeable moisture barrier
- Eliminates wick-back staining
- Superior tuft bind wet/dry
- Superior dimensional stability
- Passes British Spill and Moisture Impact Tests
- 24" x 24" modular carpet tile
- Limited Lifetime Wear and Backing Warranty

SQUAREBERRY FEATURED all colors available in all three patterns



alder (5101)



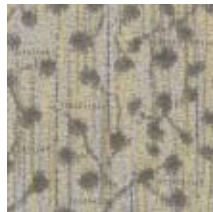
beech (7303)



camellia (5204)



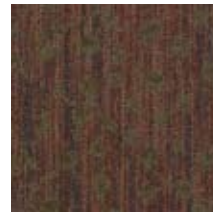
cedar (8212)



cottonwood (5205)



cypress (4406)



dogwood (8502)



elm (4311)



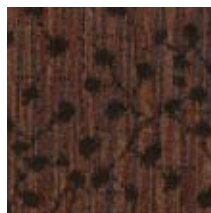
ginkgo (4210)



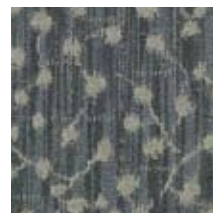
hickory (8316)



ironwood (3208)



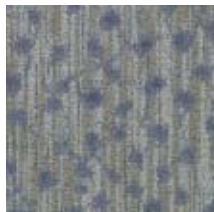
magnolia (8514)



poplar (3415)



sumac (5207)



tupelo (1213)



willow (3409)

Mannington Works.

800 241 2262 manningtoncommercial.com

Printed on recycled paper. Please help us close the loop by recycling this brochure or by sharing it with another individual.

MCTXC

MANNINGTON
COMMERCIAL